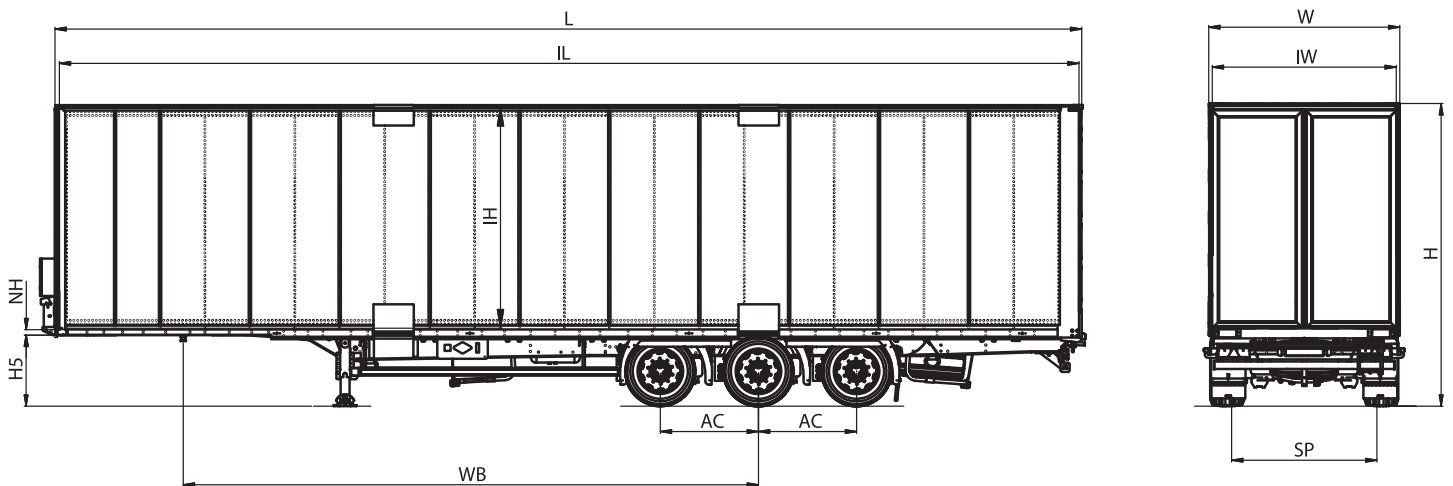


Talson Intermodal
TTG TAL
 Technical Sheet



TECHNICAL DATA

H5	5th Wheel Height	950 mm
WB	Wheel Base	7.680 mm
IL	Inner Length	13.615 mm
L	Total Length	13.710 mm
IW	Inner Width	2.462 mm
W	Total Width	2.550 mm
H	Overall Height	4.040 mm
IH	Inner Height	2.950 mm

TECHNICAL CAPACITIES

Tare Weight	8.600 kg
Total Permissible Weight	39.000 kg
Technical Possible Axle Load	27.000 kg
Technical Possible King-pin Load	12.000 kg

SPECIAL FEATURES

- Aluminum panel technology
- Multi-purpose Talfix® panels
- EN 12642 - Code XL Certificate
- Huckepack design for railway operation

Talson Intermodal

TTG TAL

Detail Brochure



HUCKEPACK

Intermodal train compatibility execution according to e - f - g-i type wagon types according to UIRR. Huckepack design for railway operation (4 grappler pockets / coloured) appropriate for P400.



GARMENT BARS

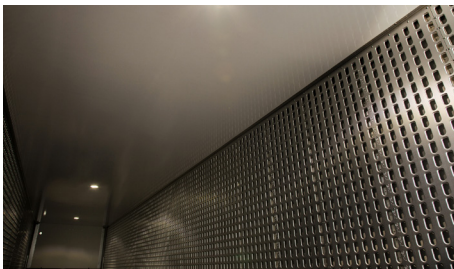
A component of patented Talfix systems, the garment bar allows garments to be hung inside the trailer with ease. The bars also lock into place providing extra load security.

FLOOR PROTECTION PLATE

The entrance of the trailer is lined with a 600 mm, non slip steel plate.

TALSON DOOR

Talson door is a container style door, designed to provide maximum strength at the rear and optimum load security. It improves durability and handling of the trailer. Also, it can be easily equipped with electronic lock systems to enhance security.



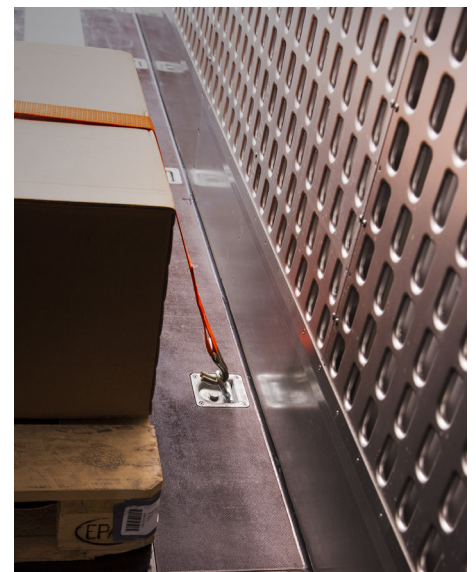
TALFIX

Multi-functional, patented Talfix system more than 10.000 holes enables you to combine carriage-loading models in one trailer. It offers double decking, garment hanging and extra load security. It provides multi-functional usage of the vehicle to increase profitability.



DOUBLE DECK BAR

A component of patented Talfix systems, the double deck bar with 1 daN capacity each, allows you to create a second tier inside the vehicle for maximum carrying capacity. Plus, the height of the deck can be adjusted for maximum efficiency and profitability.



INTEGRATED LASHING RINGS

Talson trailers are equipped with 26 lashing rings, 13 on each side, discreetly integrated into the vehicle floor to anchor heavy weights for maximum load security.